

St. Kilian Congregation
428 Forest Street
Hartford, Wisconsin 53027-1016

Parish Center**(262) 673-4831**

If you wish to speak directly with a staff member, dial the extension number listed below. Otherwise, stay on the line and the secretary will assist you.

Parish Staff

Pastor	Fr. Michael Petrie petriemj@archmil.org	401
Pastoral Associate	Sr. Helen Hurley, O.P. hurleyh@archmil.org	402
Parish Secretary	Mary Schwalbe schwalbem@archmil.org	403
Organist	Audrey Timm-Rhinehart rhineharta@archmil.org	405
Director of Religious Education	June Strobel strobelj@archmil.org	406
Director of Administrative Services	Steve Schmit schmits@archmil.org	404
Director of Environmental Services	Dan Leischer leischerd@archmil.org	305
Secretary	Beverly Oechsner oechsnerb@archmil.org	410
Custodian	Hulda Hetzel	403
School Principal	Angela Little littlea@archmil.org	116
School Office	Kris Thimm thimmk@archmil.org	117
St. Kilian School Address	245 High Street, Hartford, WI 53027 (262) 673-3081	

Fax

Parish Center	(262) 673-4872
School Office	(262) 673-0412

Sunday Mass Schedule

Saturday 4:30 p.m.

Sunday 8:30 a.m.
10:45 a.m.
Weekdays Consult Bulletin

Parish Mission Statement

We the members of the Catholic Parish in Hartford and Erin called St. Kilian, part of the universal Church, acknowledge God as our Father, Jesus as our Lord and Brother, and the Spirit as our guide. As a people of God, adults and children, we gather as a community: to pray, worship and be nourished by Word and Sacrament; to educate and be educated according to the Gospel; to be motivated and strengthened; in our outreach to those beyond ourselves; to offer as stewards our time, talent and treasure to meet the needs of all God's people; to cherish all God's gifts from seeds of earth to seeds of life. We are called by our baptism to create through ministry, an atmosphere which nurtures spiritual growth and a sense of Christian community. As a parish we are challenged to conduct our relations with a commitment to integrity, honesty and respect.

Biography of St. Kilian

St. Kilian was born in Ireland around the year 640 AD. He was a missionary who was sent by Pope Conon in 686 to preach the gospel in Baden and Bavaria (parts of modern Germany). He was killed in 689, along with two companions: Colman, a priest and Totnan, a deacon. The traditional date of his feast is July 8 which commemorates the presumed date of his death. A parish's patronal feast day is commonly celebrated on a nearby Sunday since that is when the largest number of parishioners can gather.

Safe Environment

Our parish buildings by their very nature are open to the public. We try to provide a safe environment for all, especially our children. Generally speaking, the more accessible and conspicuous an area the safer it is. The less conspicuous an area, the greater the need for parental supervision. As part of our safe environment program, the staff has identified these areas needing increased supervision even when the buildings are occupied: all bathrooms (church and school), the circle room and its hallway (church), the breezeway between the church and the parish center first floor, the stage (gym) and the health room (school).

Virtus

All parish staff members and any volunteers who have regular contact with children (more than twice a semester) are required to participate in the Virtus program. This program provides ongoing education and skills development so that we can recognize potentially abusive situations so as to help prevent them and help bring an end to this sinful crime. We encourage all parents and parishioners to participate in the training sessions announced in the parish bulletin.

Logistics for the New Parishioner

Worship

What services are provided for the hearing impaired?

Hearing assistance devices are in the sacristy. An usher or another liturgical minister would be happy to help you find them.

Where can I find a Missalette?

Missalettes can be found in the gathering space in the left drawer under the image of Our Lady of Guadalupe or on the table in the breezeway entrance.

How do I know the hymn numbers?

The hymnboards are located at the top of the NW and NE pillars.

How do I know which hymnal to use?

Use the blue hymnal if the number is preceded with a zero, e.g. 015. Otherwise use *Ritualsong* (red hymnal).

I'm new to the Catholic Church and don't know the responses for mass by heart yet.**Where do I find them?**

The order of worship begins at number 287 in *Ritualsong*. The Catholic mass has a variety of responses and options, so you may want to familiarize yourself with the order before mass begins.

Service**Where do I put the Campbell's Soup Labels, Boxtops for Education, Sentry Receipts and milk caps from Golden Guernsey, Kemps and Morning Glory gallon milk containers?**

These items may be placed in the gathering space in the right drawer beneath the image of Our Lady of Guadalupe. For individuals who use the breezeway entrance, place the items in the drawer of the table beneath the statue of St. Barbara.

Where do I put groceries for the Hartford Food Pantry? How do I make monetary donations to the pantry?

Groceries may be put in the gathering space kitchen or in the cabinet below the image of Our Lady of Guadalupe. For those who use the breezeway entrance, put the groceries in the basket under the table. To make monetary donations, use the envelope marked Hartford Food Pantry or use a blank envelope and specify that the contents are for the Hartford Food Pantry.

Where do I drop off food for parish events?

For socials, take the food to the gathering space kitchen. For funeral luncheons, take the food to the St. Theodore kitchen in the parish center. For major events, take the food to the cafeteria kitchen.

Stewardship**I received my first envelope packet in the mail yesterday. What are all the different envelopes for?**

There is an envelope provided for each Sunday. This money supports the general operation of the parish (salaries, heat, electric and expenses). The parish also has restricted funds. The following envelopes are for these funds. The monies donated to these funds are not used for general operating expenses.

- There's a monthly blue envelope entitled "Growing Together." Its contributions defray the expenses associated with renovating the church.
- The contributions in the Education Endowment envelope help grow a fund whose earnings supplement the school and religious education programs.

- The contributions in the Maintenance envelopes are used for capital expenses.
- The contributions for the Hartford Food Pantry and the St. Vincent de Paul Society are turned over to them regularly.
- The collection from the Thanksgiving Ecumenical Service is divided in half between the St. Vincent de Paul Society and the Hartford Food Pantry .
- The collection from the Thanksgiving mass is given to the St. Vincent de Paul Society .
- The Holy Thursday collection is given to St. Benedict's Meal Program and the Good Friday Collection goes for the upkeep of the Holy Land shrines. If collections are taken at the Lenten Ecumenical Services, they go to the Hartford Food Pantry.

Parish Picnic and Parish Festival

Each July, near St. Kilian's feast day, we have our annual picnic. It is a time for welcoming new parishioners, a time to catch-up on old acquaintances, and a time to share food and play together. All are invited!

Every autumn we have a parish festival. Helping with the festival's various activities is a wonderful way for parishioners to get to know one another. There's a super raffle and a magic show, food, drinks, baskets from the heart, country store, rummage sale, music and dancing and children's games. The fall festival's revenue supplements your Sunday contributions.

Sacramental and Spiritual Life

Rite of Christian Initiation of Adults (RCIA)

This initiation process is reserved for those older than seven who have not been baptized. It includes regular reflection upon the Sunday readings and seeks to help one develop an explicitly Christian spirituality. It concludes with the celebration of baptism, confirmation and first communion at the Easter Vigil.

Children's Catechumenate

The Children's Catechumenate is designed for children past the age of seven that are unbaptized or uncatechized. They shall be instructed for sacramental initiation using age appropriate materials. The process includes regular reflection upon the Sunday readings and seeks to help individuals develop an explicitly Christian spirituality. Such instruction usually extends over a one-year period to allow for formation and readiness for the celebration of the sacraments of initiation and to prepare the children to enter the regular religious formation classes at their appropriate grade level for continued instruction. Contact June Strobel, Director of Religious Education for more information.

Rite of Infant Baptism

Catholic parents can seek baptism for their infants (anyone under age seven) by appointment with Sr. Helen Hurley. Parents are asked to attend a baptismal preparation class.

Confirmation

In the Archdiocese of Milwaukee, children are confirmed near age sixteen, in their junior year of high school. To prepare for this sacrament of initiation, they attend religious education classes, complete service projects, participate in a retreat and participate in the liturgical life of the parish.

Confirmation of Adults Baptized Catholic and Reception into the Full Communion of the Catholic Church

Those practicing adult Catholics who have not been confirmed and those practicing Christians of other denominations who are older than seven and wish to be in full communion with the Catholic Church,

attend several classes in theology. Once they have attended these classes and are participating regularly in the life of the congregation they will be confirmed or received into full communion. Individual adjustments are always made in this timetable. Those who are baptized, but have no religious upbringing, probably will be asked to participate in certain aspects of the Rite of Christian Initiation of Adults.

First Eucharist

Preparation for First Eucharist occurs in the second grade. Direct preparation for the sacrament is completed by the parents in the home. The school and religious education programs assist parents in carrying out this right and responsibility.

First Reconciliation

Preparation for First Reconciliation occurs in the second grade. The program is designed to aid the students and their parents in feeling comfortable with this sacrament of healing.

Reconciliation

Individual reconciliation is celebrated at the time indicated in the bulletin or by appointment with the Pastor. Communal services are celebrated during Advent and Lent.

Eucharist for the Sick and Homebound

If you are sick, homebound or hospitalized you may request that a family member, or one of the Eucharistic ministers bring the Eucharist to you. The Eucharistic ministers ordinarily do this on Sundays and First Fridays.

Anointing of the Sick

The Anointing of the Sick can be administered to individuals who are facing serious illness, serious surgery or suffering the effects of advanced age. Anointing of the Sick is celebrated at the time indicated in the bulletin or by appointment with Fr. Mike Petrie. Those seeking the sacrament are encouraged to meet with him before going to the hospital. Periodically, the sacrament is celebrated communally.

Viaticum and Prayers for the Dying

When a Catholic is dying, the traditional "last rites" are receiving communion for the last time (Viaticum) and praying the prayers for the dying with the family. The Pastoral Associate, Eucharistic ministers and lay presiders, as well as the Pastor, are able to administer Viaticum outside mass and may lead the prayers for the dying.

Ministry to the Grieving

When a family has experienced the death of a loved one and is in need of support, please call Sr. Helen Hurley for information about the services the parish provides.

Marriage

St. Kilian's marriage preparation process uses personal reflection, reflection upon your relationship and liturgical and musical preparation to help you get off to a good start with your marriage. Everything we do, including prepare the details of the wedding itself, has a good marriage as its goal. We are indeed privileged to walk with you at the beginning of your lifetime journey together. Call Fr. Mike Petrie at (262) 673-4831, ext. 401 at least six months prior to your anticipated wedding date.

Small Groups

We encourage you to create bible study groups, prayer groups, reflections groups, support groups and fun groups. Any group may meet under parish auspices provided that your plans and materials are approved by Fr. Mike Petrie or Sr. Helen Hurley. We'll be happy to get you started and support you in your endeavors. These groups are a wonderful way of fostering friendship and companionship. Scripture reflection groups, a woman's reflection group and a support group for those who've recently divorced are currently meeting.

St. Kilian School

Mission Statement

We believe that St. Kilian School is a child-centered, caring, Catholic community of learners dedicated to the Christian valued education of the whole person, spiritually, intellectually, physically, socially and emotionally.

The educational staff recognizes the individual God-given talents and capabilities of each student. Students experience academic progress through independent study, cooperative learning, and through small group and whole group presentations.

St. Kilian School fosters an atmosphere of active intellectual pursuit in a self-disciplined environment.

Academic Philosophy

St. Kilian School's philosophy is centered upon a positive, Christian-based learning environment that encourages each individual to grow academically, socially and spiritually so that they may realize their full potential. This safe environment fosters strong Christian values, a lifelong love of learning and empowers students to be responsible, respectful and caring individuals.

Curriculum

St. Kilian School offers classes for students in grades 4K through eighth grade. The curriculum includes, but is not limited to, the following disciplines: Language Arts, Reading, Literature, Spelling, Composition, Social Studies, Religion, Mathematics, Science and Health. The curriculum also includes the following specialty programs: Art, Music, Physical Education, Library Science and Computer Technology. The school's small class sizes, quality staff members and parental involvement help to ensure the well-rounded educational opportunities available at St. Kilian. The school receives its accreditation from the Wisconsin Nonpublic Schools Accrediting Association and the Archdiocese of Milwaukee.

Community Service

St. Kilian School students help to serve the local community, which provides students with rich personal and spiritual growth opportunities that reach far beyond the walls of the classroom. The students participate in the following service projects:

November	Drive for the Hartford Food Pantry, sponsored by the Student Council.
December	Participate in Operation Christmas Child that is sponsored by Samaritan's Purse.
January	Raise funds for the Barb Arnold Memorial Scholarship. The scholarship, sponsored by the Home and School Association and the Athletic Committee, is given in memory of Barb Arnold who was a Physical Ed. Teacher at St. Kilian School who had passed away in December 2000. The scholarship is a \$500.00 award given to seniors in high school for service to St. Kilian School, the parish and the community.

Throughout the year, the fifth grade students make cards for the homebound.

Religious Education Program

The basics of faith are presented at every grade level in an age-appropriate manner. Lessons are designed to help young people experience their Catholic identity, integrate their Catholic values, and express their Catholic beliefs. The program is committed to sharing the richness of our past, engaging in the realities of the present and developing skills to meet the challenges of the future.

Children in 4K – Grade 7 attend formation classes on Sunday mornings from 9:30 - 10:30 a.m. On the first and third Sunday of the month, the children arrive at 8:15 a.m. and attend the 8:30 a.m. mass prior to class. Children participate in Operation Christmas Child and a yearly Food Collection.

Students in Grades 8-11 attend classes on Sunday evenings from 6:30 - 8:00 p.m.. There are three components to the high school program. The educational component of the program is the formation classes on Sunday evenings. The spiritual component is highlighted with individual Days of Reflection for students in Grade 10 and Retreat Day for the 11 Grade confirmation candidates. The service component of the program is the service experiences that the students choose to do.

Service experiences include parish and community opportunities such as: being a Teacher's Aide on Sunday mornings, participating in the music ensemble that plays occasionally at mass, working with the Cherub or Chorister choirs, working with the Red Cross Bicycle Project or the Hartford Christmas Project. Milwaukee Outreach opportunities include: the St. Benedict's Meal Program, the Franciscan Peacemakers Project and Casa Maria.

Music Opportunities at St. Kilian

For further information about any of the following groups, contact Audrey Timm-Rhinehart at 673-4831, ext. 405.

SATB Choir

- Four-part choir for adults and high school students.
- Rehearses Wednesdays from 8:00 - 9:00 p.m. in the church from September through June (Pentecost).
- Scheduled to lead mass once a month and for special occasions.

Cherubs

- Children 3-6 years of age.
- Rehearses Thursdays from 6:00 - 6:30 p.m. in the St. Theodore Room from September through May.
- Activities include: singing, music games and instrument making.
- Scheduled to help lead mass once a month and for special occasions.

Choristers

- 1st through 5th grade students.
- Rehearses Thursdays from 6:30 - 7:15 p.m. in the St. Theodore Room from September through May.
- Activities include: singing, music games and instrument making.
- Scheduled to help lead mass once a month and for special occasions.

Older Youth

- 5th through 8th grade students.

- Rehearses Thursdays from 7:15 - 8:00 p.m. in the St. Theodore Room from September through May.
- Students expand singing skills and leadership (beginning cantoring), learn accompaniments using handbells, Orff and band instruments (bring your own instrument), basic music reading skills and experience helpful.
- Scheduled to lead mass once a month and for special occasions.

Handbell Choir

- Adults and high school students.
- Rehearses Thursdays from 8:00 - 9:00 p.m. in the church all year.
- Ability to read music helpful; regular attendance at rehearsals is necessary.
- Plays for mass once a month/6 weeks.

Youth Instrumental Group

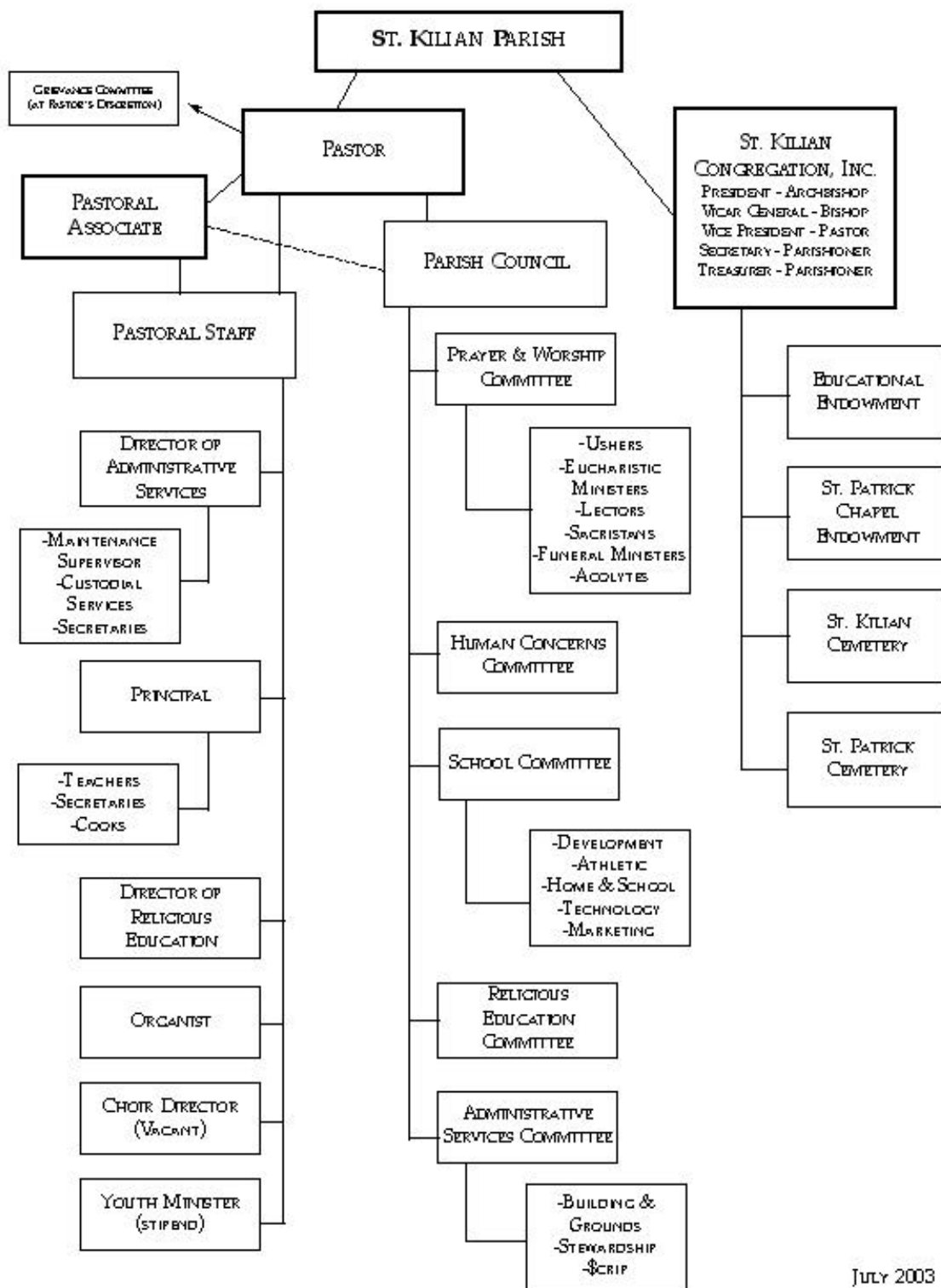
- High school students (younger students by audition).
- Rehearses Sundays from 11:45 - 12:30 p.m. in the St. Theodore Room all year (one month break in the summer).
- Bring your band/orchestra instrument and learn to accompany congregational hymns. Opportunity for solos/ensembles for preludes, offertories, etc.
- Regular attendance at rehearsals is necessary.
- Leads mass once a month and for special occasions.

Cantor

- Leads Sunday masses.
- Scheduled for one or two masses per month/season.
- Practice individually with director.
- Small groups are formed from the cantors and SATB choir.

Adult Instrumental Group

- Rehearses on their own for special occasions.



St. Kilian Parish Council

Harriet Doerfert	2006	673-3989
Joe Kohler	2006	673-4637
Robert Lechner	2007	673-4375
Greg Ledesma	2007	673-4700
Mark Liesener	2005	673-2137
Sheila Manzek	2007	670-9997
Mark Magruder	2006	673-4454
Ane Ohm	2005	673-3948
Margaret Smith	2005	673-3312

Ex Officio Members

Ed Hurula, <i>Trustee Treasurer</i>	2005	673-5253
Kevin Volm, <i>Trustee Secretary</i>	2006	673-9397
Father Michael J. Petrie, <i>Pastor</i>	2006	673-4831, ext. 401

Parish Council Committees

The Parish Council has five standing committees which are listed below. Included within the information on the standing committees is information on various subcommittees as well.

I. Prayer and Worship Committee

This committee of the council prepares the community for worship by providing a hospitable environment, by organizing communal anointing of the sick and an occasional signed mass, and by assuring the training of the liturgical ministers. This group also promotes and organizes the biannual Parish Mission. We evaluate our liturgies using theology, liturgical guidelines and rubrics, and, most importantly, the Second Vatican Council's basic liturgical principle, that is, that full, active and conscious participation in Sunday Eucharist is the source and summit of all else the church does.

Prayer & Worship Committee Members

Monica Holmes, <i>Chairperson</i>	673-4069
Greg Ledesma, <i>Parish Council Liaison</i>	673-4700
Scott Kenitz	673-5806
Fr. Mike Petrie, <i>Pastor</i>	673-4831, ext. 401

II. Human Concerns Committee

The Human Concerns Committee discerns needs of persons in our parish and in the wider community, especially the poor, and identifies resources to meet those needs enlisting the active cooperation of all parish members.

The committee meets on the fourth Tuesday evening of the month. Each meeting begins with a proclamation of the Gospel of the following Sunday with a shared reflection on the relevancy of the scriptures in our lives.

Enriched by the Word of God and committed to the justice dimensions of scripture, the members discuss and initiate ways to involve the parish in actively accepting the responsibility of their baptismal call to serve humanity in justice and love.

Among the outreach projects are the following:

- PARISH VISITATION: Parishioners visit the homebound and nursing homes and bring the Eucharist.

- HEARTWARMING MEALS (special needs): Members of the Human Concerns, with the help of other parishioners, provide meals for families and individuals who may be in need of a prepared homemade meal. The purpose of this ministry is to bring comfort to families experiencing stress due to illness or the loss of a loved one, families going through times of transition, families who are welcoming a new baby, families enduring unemployment or any kind of hardship.
- FUNERAL MEALS: Meals are served after each funeral liturgy to the family and friends of the deceased.
- PRAYER NETWORK: Requests for prayers are called to or e-mailed to assigned leaders. The message is passed on and the intentions are prayerfully remembered. Names are not used in the message in accord with confidentiality restrictions.
- SUNDAY SOCIALS: The Human Concerns Committee coordinates the Sunday Socials with the various parish committees and ministries serving the refreshments after the weekend liturgies.
- CHILDREN'S COLLECTION: On the third weekend of the month the children are called forward during the liturgies to make contributions to parish, community, and global causes. Ordinarily the causes directly involve children in need. Donations have gone to such projects as:
 - Sponsorship of children from Third World Countries
 - CROP WALK
 - Our own St. Kilian WORK CAMP Project
 - HUHS Project Graduation
 - Catholic Social Services as disasters and emergencies occur

The committee sponsors other seasonal outreach projects also:

- SHOEBOX CHRISTMAS: Shoeboxes are filled with small Christmas gifts and delivered to children in Third World Countries.
- JANUARY BABY SHOWER: Baby gifts are collected and delivered to the Washington County Giving Room.
- HUHS PROJECT GRADUATION
- OPERATION RICE BOWL
- RESPECT LIFE EVENTS
-

Giving Tree In conjunction with the Hartford Christmas Committee, the parish participates in a program during Advent which helps the needy in the Hartford area. Parishioners select a gift tag from a Christmas Tree in the gathering space which has a gift item or two listed on it. Parishioners bring the item(s) to church, place them under the tree, and the gifts are then distributed to those in need.

Human Concerns Committee Members

Mary Kenitz, <i>Chairperson</i>	673-5806
TBA, <i>Parish Council Liaison</i>	
Jeanne Dietzler	673-4863
Beth Goretski	673-0741
Lavonna Jovanovich	673-0241
Sally Jude	670-0272
Mary Murphy	673-9486
Grace Salkowski	
Naomi Wagner	670-0354
Sr. Helen Hurley, <i>Pastoral Associate</i>	673-4831, ext. 402

III. St. Kilian School Committee

The School Committee, as a standing committee of the Parish Council, shall have as its primary concern, the spiritual and intellectual development of the students. The School Committee monitors the activities of the sub-committees associated with St. Kilian School listed below.

St. Kilian School Committee Members

Angela Little, <i>Principal</i>	673-4831, ext. 116
Mary Seghers, <i>Teacher Representative</i>	
Harriet Doerfert, <i>Parish Council Liaison</i>	673-3989
Kim Curtis, <i>Chairperson</i>	670-6491
Tom Carl, <i>Secretary & Technology Committee Representative</i>	670-1725
Sue Bell	673-9532
Dave Larson	673-2866
Ellen Kohler, <i>Home & School Representative</i>	673-9532

St. Kilian School Subcommittees

Development Committee

The Development Committee shall create, define and maintain a connection with St. Kilian School Alumni through an up-to-date database, two annual newsletters, one annual appeal, and a Friends of St. Kilian Dinner. The Development Committee monitors educational and religiously related legislation and news sources favorable or unfavorable to religious organizations. The activities of the Development Committee will increase the level of third source funding for the operation of St. Kilian Educational Ministries through direct donations, grants and planned activities. The primary repository for funds raised through activities is the Education Endowment Fund.

Development Committee Members

Ron Weber, Jr., <i>Chairperson</i>	673-1993
Lynn Aumann	673-2951
Greg Bell	673-9532
Todd Doerfert	673-7508
Beth Gorman	670-6016
Dan Gorman	670-6016
Greg Klink	673-4086
Jim Klink	673-7381
Linda Simko	673-3121
Angela Little, <i>Principal</i>	673-4831, ext. 116

Athletic Committee

The Athletic Committee is a volunteer organization whose primary purpose is to organize and provide a school sports program for St. Kilian School students. The Athletic Committee provides an understanding of skills and competition, emphasizing Christian sportsmanship and teamwork. The Athletic Committee provides community outreach through its annual tournament in February.

Greg & Kathy Klink, <i>Athletic Directors</i>	673-4086
Tim Algiers	673-6293
Ray Aumann	673-2951

Tom Kaul	673-7476
Henry Klink, Jr.	670-0275
Bob Lechner	673-4375
Mike Pfeiffer	673-4578
Dale Scherr	673-9267
Jay Seldon	673-4256
Scott Thielmann	673-2408
Kim Vaughn	670-6619
Joe Wisth	673-6251
Angela Little, <i>Principal</i>	673-4831, ext. 116

Home and School Association

St. Kilian Home and School Association provides a means of communication and outreach between parents, school staff and school committee. The Home and School Association provides parenting programs as outreach for promotion of welfare and education of children. The Home and School Association supports St. Kilian School and St. Kilian Parish through assistance activities, social functions and fundraisers. The Home and School Association provides community outreach in order to create a greater appreciation of Catholic Education.

All parents/guardians of present students shall be included as members of the Home and School Association. Any other person interested in the objectives stated in the Home and School Constitution Article II shall be eligible for membership.

Officers:

Ellen Kohler, <i>President</i>	673-4637
Randy Geoffroy, <i>Vice President</i>	673-2238
Robyn Reeve, <i>Secretary</i>	670-0672
Beth Gorman, <i>Treasurer</i>	670-6016

Technology Committee

The purpose of the Technology Committee is to establish, implement and maintain a plan for integration of technology into the school, parish and community. Students and adults need to be prepared to handle the challenges of an ever-changing, highly technological society. Parents will be educated in technology through open houses and newsletters. Parish Members will be offered opportunities to expand their technological literacy through informational meetings and hands-on workshops. The Technology Committee is committed to explore innovative methods of using technology in conjunction with businesses, libraries and other schools in the local and global community.

Technology Committee Members

Eric Dietenberger, <i>Chairperson</i>	673-0142
Mary Braidigan	673-0683
Kay Becker	673-2566
Greg Bell	673-9532
Tom Carl	670-1725
Ian Davison	673-9611
Bahri Gungor	673-5005
Lynn Guyer	628-8898
Dave Larson	673-2866
Karen Beutler, <i>Technology Teacher</i>	
Mary Kirley, <i>Teacher Representative</i>	673-2347
Beverly Miller, <i>Principal</i>	673-4831, ext. 116

Marketing Committee

The St. Kilian School Marketing Committee is dedicated to the retention of families currently registered in the school and to the recruitment of new families to the school and to the parish.

Marketing Committee Members

Joan Schnorenberg, <i>Chairperson</i>	673-7427
Patricia Carroll	(920) 349-3932
Katey Clarenbach	673-6540
Nicole Flanagan	673-2080
Barb Horst	673-9518
Mary Lindfors	670-0107
Robyn Reeve	670-0672
Jane Tomashek	670-6991
Mark Wolf	670-9794
Angela Little, <i>Principal</i>	673-4831, ext. 116

Parish Council Committee's, *continued*

IV. Religious Education Committee

One of the primary roles of the Church is to proclaim the Good News and to teach as Jesus did. The purpose of the Religious Education Committee is to foster the Christian formation of parishioners at all stages of human development. This committee recognizes that religious formation is a lifelong process that leads individuals to Christian service.

This committee is advisory to the Director of Religious Education in the design, implementation and evaluation of programs regarding the educational formation, spiritual development, sacramental preparation and parish and community service opportunities.

Religious Education Committee Members

Sheliah Krebs, <i>Chairperson</i>	673-4189
Mark Liesener, <i>Parish Council Liaison</i>	673-2137
Beth Goretski	673-0741
Charlene Reise-Hattori	673-3313
Andrea Levsen	670-0325
Cindy Volm	673-9397
Connie Willer	673-0602
June Strobel, <i>Director of Religious Education</i>	673-4831, ext. 406

V. Administrative Services Committee

The Administrative Services Committee is responsible for the review of monthly financial reports, insuring that proper procedures and controls are in place to protect St. Kilian assets. The committee also reviews the annual budget prepared by the staff and makes recommendation to the Parish Council for both operating and capital expenditures. The Administrative Services Committee also monitors the activities of its subcommittees listed below.

Administrative Services Committee Members

Roger Thimm, <i>Chairperson</i>	673-4960
Margaret Smith, <i>Parish Council Liaison</i>	673-3312
Ed Hurula	673-5253

Kevin Volm
Steve Schmit, *Director of Administrative Services*

673-9397
673-4831, ext. 404

Administrative Services Subcommittees

Building and Grounds Committee

The Building and Grounds Committee prepares a five-year plan for maintaining the physical condition of parish property, buildings and grounds. Periodically, the committee will perform minor tasks when need arises.

Building & Grounds Committee Members

Brian Kowalke, <i>Chairperson</i>	673-4674
Ray Boden	673-5347
Tim Clarenbach	673-6540
Greg Karrels	670-6146
Rusty Lang	673-6008
Fred Peters	673-5008
Ralph Roethle	673-3084
Ralph Schellinger	673-5410
Joe Wisth	673-6251
Dan Leischer, <i>Director of Environmental Services</i>	673-4831, ext. 305

Stewardship Committee

The Stewardship Committee is responsible for the maintaining the ongoing time, talent and treasure needs of the parish.

Stewardship Committee Members

Greg Ledesma	673-4700
Bill Thimm	673-6788
Fr. Mike Petrie, <i>Pastor</i>	673-4831, ext. 401

SCRIP Committee

The St. Kilian Scrip Fundraising Program is a third source of funding designed to assist in the budgetary needs of the educational ministries of St. Kilian Parish.

Scrip Committee Members

Sue Wendt, <i>Chairperson</i>	670-0302
Lisa Geoffroy	673-2238
Barb Gerfin	673-6708
Karen Klink	673-7381
Kim Vaughan	670-6619
Linda Thimm	673-4960
Hope Welch	673-4549
Mark Wolf	670-9794
Angela Little, <i>Principal</i>	673-4831, ext. 116
June Strobel, <i>Director of Religious Education</i>	673-4831, ext. 406

St. Kilian Education Endowment Committee

The St. Kilian Education Endowment Committee advises the Board of Directors of St. Kilian Congregation on the annual activities of the Education Endowment Trust in order to hold and manage current and future resources of the trust fund.

Advisory Board:

Ron Weber, <i>Chairperson</i>	673-1993
Beth Kuehl	673-7970
Dave Larson	673-2866
Linda Simko	673-3121
Connie Willer	673-0602

St. Patrick's Cemetery Committee

This committee advises St. Kilian Congregation's Board of Directors about the investments and upkeep of St. Patrick Cemetery.

Advisory Board:

John Collins	673-6719
Pat Nickols	(619) 759-1934
Dave Schippers	673-2211
Frank Weber	(262) 285-4696

St. Patrick's Chapel Endowment Fund

This committee advises St. Kilian Congregation's Board of Directors about the investments that assist in the chapel's upkeep.

Advisory Board:

Therese Carr	673-3655
Rita Hanrahan	673-5534
Jennifer Jochims	673-0758
Carol Montag	673-6062
Ane Ohm	673-3948
Germaine Semler	673-4327

Organizations**Holy Name Society**

A social and service organization, the Holy Name Society, is open to any male 8th grade and older. The focus of this group is to honor the Holy Name of Jesus. Breakfast meetings are held the second Sunday of each month following the 8:30 a.m. mass. For more information, contact Tom Thielmann at (262) 673-5881.

Daughters of Isabella, Santa Maria Circle #269

The Daughters of Isabella is a charitable organization of practicing Catholic women founded on the principle of its motto: Unity, Friendship and Charity. The organization meets on the second Thursday of the month to provide spiritual benefits and support to our members, while contributing to the community by sharing our talents through charitable work. The group is involved in promoting Respect for Life, the White Ribbons Against Pornography campaign and supporting other women's and family issues. The organization also conducts fundraising events to support church and community projects in the spirit of doing God's work. For more information, contact Regent Sue Wendt at (262) 670-0302.

Knights of Columbus

The Knights of Columbus is a family organization that helps families grow together in love while assisting the church and community. Every K of C council provides a wide variety of opportunities for family involvement, such as volunteer service projects, picnics and activities. All of these activities and

many others benefit the families involved, the parish and the community. For more information, contact Ron Weber, Grand Knight, at (262) 673-3916.

St. Vincent de Paul Society

The St. Vincent de Paul Society is a Catholic organization of lay people. The St. Kilian Parish Conference meets on the first Saturday of the month at 9:30 a.m. and on the third Thursday at 7:00 p.m. We strive to grow spiritually through prayer, reflection and mutual support. The organization helps provide food, shelter, clothing, furniture, transportation, medical and rent assistance to the needy of our community. Through home visits and prayer, it supports the needy both emotionally and spiritually. If you have a special need or if you would like to join the group in its charitable works, please contact Bill and Kris Thimm at (262) 673-6788.

Girl Scouts

Girl Scouting is based on the following four goals:

- To help girls develop to their full potential.
- To help girls relate to others with increasing understanding, skill and respect.
- To help girls develop a meaningful set of values.
- To help girls contribute to the improvement of society.

These four goals provide the foundation for all the activities, projects and experiences enjoyed by girls throughout their Girl Scouting experience.

Any girl in grades kindergarten through high school can become a Girl Scout:

Kindergarten	Daisy Girl Scouts
Grades 1, 2 & 3	Brownie Girl Scouts
Grades 4, 5 & 6	Junior Girl Scouts
Grades 7, 8 & 9	Cadette Girl Scouts
Grades 10, 11 & 12	Senior Girl Scouts

For more information, contact Terrie Larson at (262) 673-2866.

Cub Scouts/Boy Scouts/Eagle Scouts

St. Kilian sponsors Cub Scout Pack #3741 and Boy Scout Troop #741, both very active in the church, school and community. Cub Scouts are open to boys in 1st through 5th grade, while the Boy Scouts are for boys in 6th grade through age 18. Both programs stress having fun while learning leadership, team work, citizenship and outdoor skills. For more information about Boy Scouts, contact Ralph Schellinger at (262) 673-5410. For information about Cub Scouts, contact Todd HarriSon at (262) 670-6436 or for information about the Eagle Scouts, or Adventure Crew contact, Dan Meyer at (262) 673-7842.